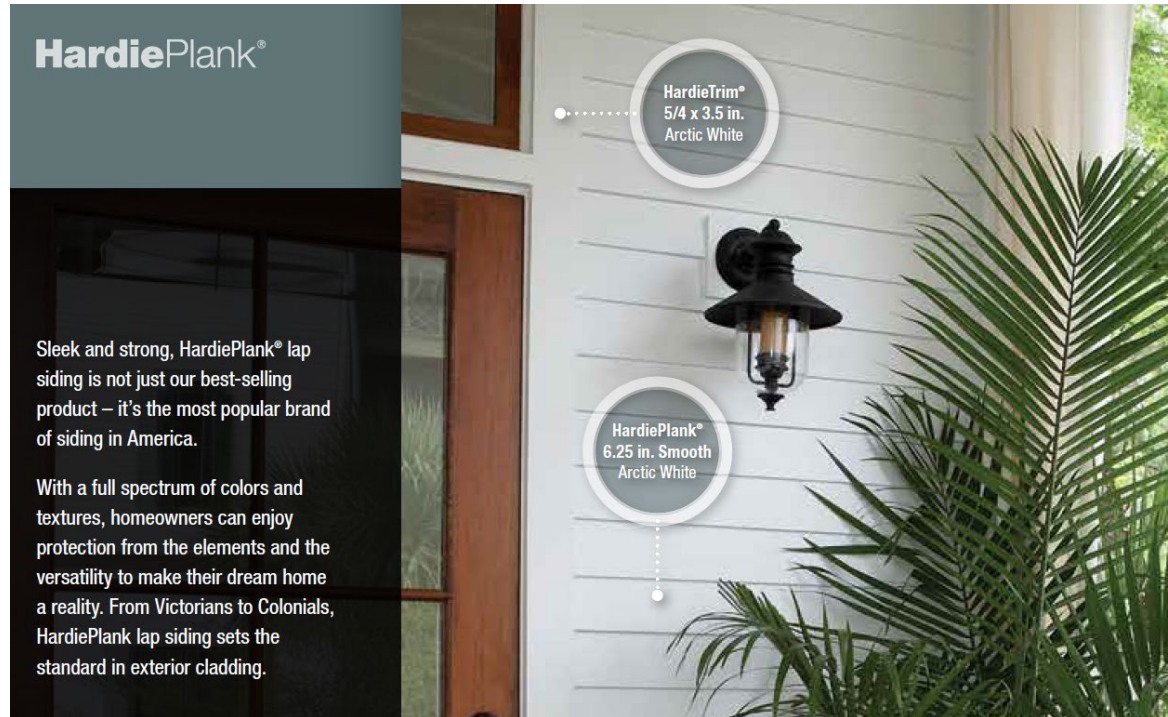


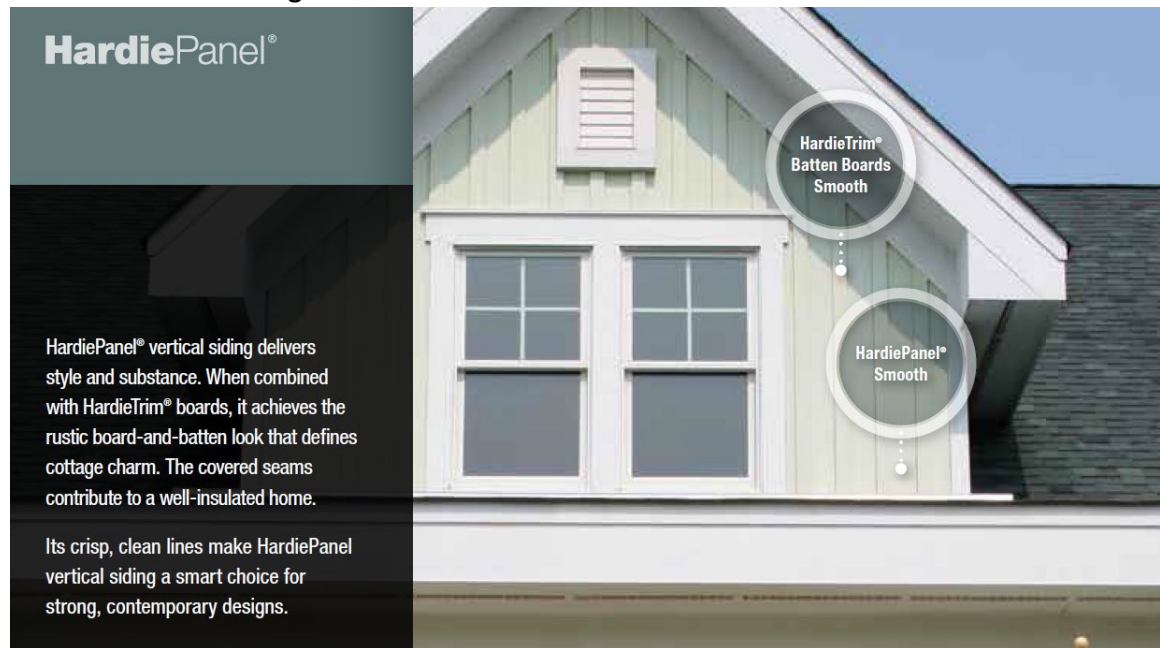
Siding: James Hardie (Cementitious)

Ship Lap Siding



Smooth Finish, 5/16" Thickness x 8-1/4" Width (7" Exposure)

Board and Batten Siding



Smooth Finish Boards, 5/16" Thickness

Smooth Finish Battens, 3/4" Thickness

Siding (cont'd)

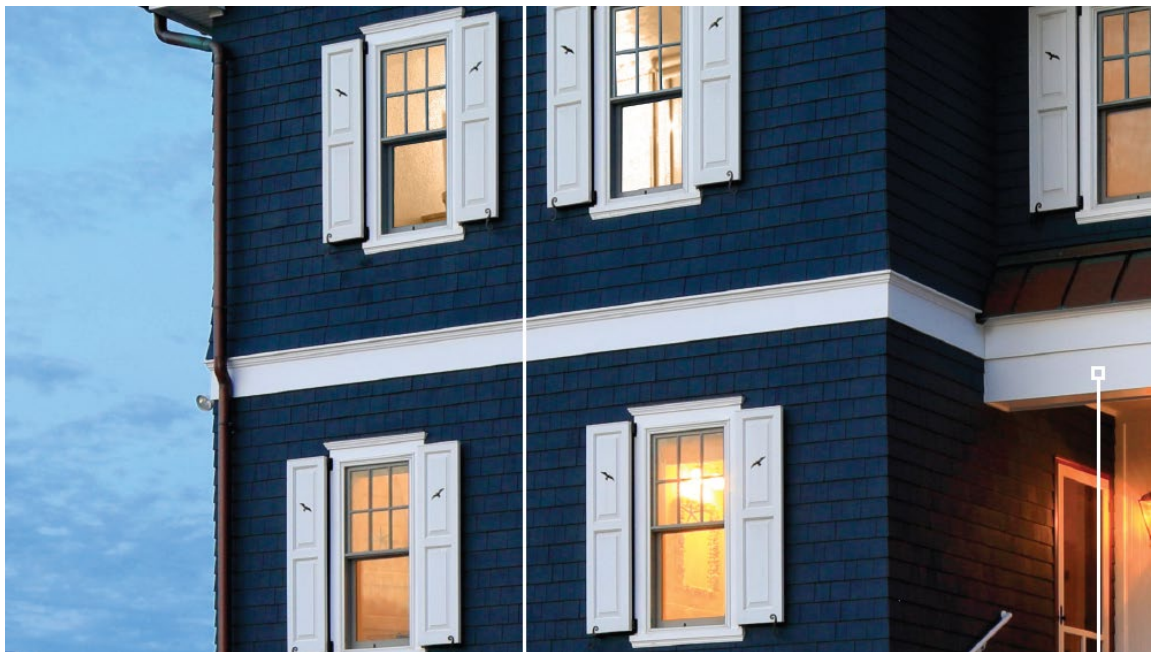
Shingle Siding



Staggered Edge Panel, 1/4" Thickness x 15-1/4" Height (6" exposure)

Trim / Moulding: Azek (PVC, UV-resistant)

Historic Sill and Water Table



2-1/32" Deep x 1-3/4" High (historic sill)
2" Deep x 2-3/4" High (water table, 1-1/2" exposure)

Trim / Moulding (cont'd)

Historic Sill and Water Table



Smooth ("Traditional") Finish, 3/4" Thickness

Roofing: Owens Corning, or equivalent

Fiberglass-Based Asphalt Shingles



Architectural Asphalt Shingles, 13-1/4" x 39-3/8" shingles (5-5/8" exposure)

Windows: Ply-Gem (Wood: Sash & Interior, PVC: Exterior Casing)

Pro Series 200 Double Hung



FEATURES

- 1 Low-maintenance cellular PVC exterior casing and brick mould ready to accept acrylic paint
- 2 Cam action sash locks with matching jambliner
- 3 $4 \frac{9}{16}$ " jamba eliminate extensive drywall work
- 4 Both sash tilt in and remove for safe and easy cleaning of exterior glass
- 5 Energy-efficient Warm Edge insulating glass
- 6 Bulb weatherstripping on sash for air-tight performance and smooth operation
- 7 Sash and interior made with select clear wood ready for staining to match any interior décor – also available with primed interior for painting
- 8 Compression balance system for simple tilt-in cleaning of exterior glass

Style comes standard with all of our 200 double hung wood/composite windows. They are equipped with a tilt-in sash system that makes cleaning simple. The low-maintenance cellular PVC exterior components and brick mould resist rot and can easily be painted. A selection of exterior casing options and simulated-divided-lite (SDL) provide a historically accurate look to help enhance the beauty of your home.



Two over One Double Hung, 3-1/2" Flat Casing, 7/8" Simulated Divided Lite (no between glass grilles) to ensure historically accurate look