

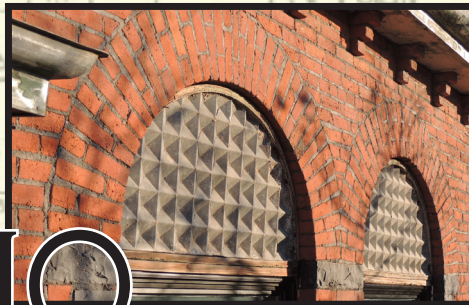
2019 ARCHITECTURAL SCAVENGER HUNT



DOWNTOWN SPOKANE

Challenge your Spokane architecture knowledge with our 2019 Architectural Scavenger Hunt! This year's hunt takes place throughout Downtown Spokane. Find the architectural features shown and keep track by writing the corresponding address on the answer spaces on the back of this sheet. There you will also find three bonus clues for buildings in Spokane County. Once you have completed the hunt, please visit historicspokane.org/hunt2019 to submit your answers and choose the "experience" prize you would like to win. Questions - email us at preservation@spokanecity.org.

BONUS: ALL TEN CLUES ARE FROM BUILDINGS THAT SHARE THE SAME ORIGINAL USE. WHAT WERE THESE BUILDINGS ORIGINALLY USED AS? Single Room Occupancy Hotels





HISTORIC PRESERVATION MONTH MAY 2019

COUNTY CLUES

Three bonus clues below are located in unincorporated Spokane County:

A



B



C



Remember to enter your answers online at www.historicspokane.org/hunt2019 - that is also where you can select which prize you are trying to win!

ANSWERS

1. Red Shield Hotel - 245 W. Main Ave.
2. Willard Hotel - 103 S. Madison St.
3. Armstrong Hotel - 402 W. Sprague Ave.
4. Fischer Hotel - 917 W. First Ave.
5. Globe Hotel - 204 N. Division St.
6. Langham Hotel - 123 N. Bernard St.
7. New Madison Hotel - 1029 W. First Ave.
8. Commerical Hotel - 1111 W. First Ave.
9. Balkan Hotel - 31 W. Main
10. Hotel Aberdeen - 101 S. Stevens St.

- A. Spokane County Poor Farm in Spangle
- B. Great Northern School in Spokane County
- C. Pairie View Schoolhouse in Waverly